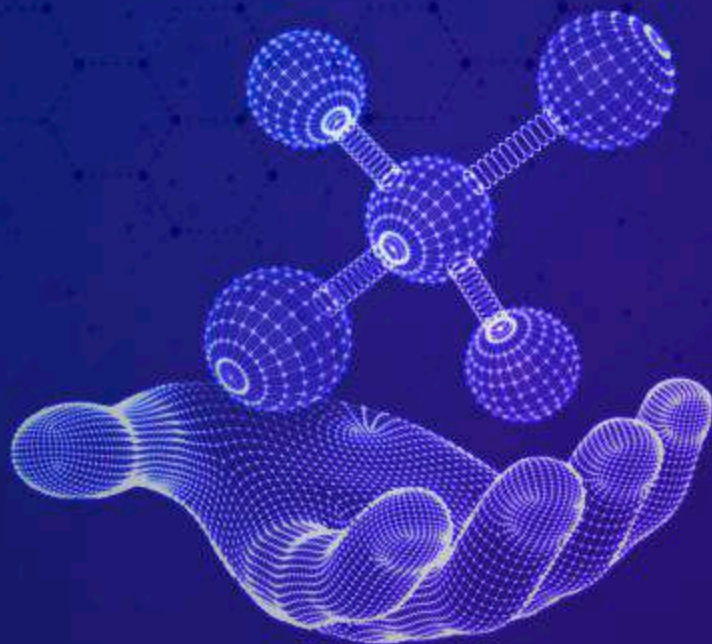




**MANDSAUR  
UNIVERSITY**  
MAKING FUTURE READY!

**LEADING THE  
WORLD OF  
RESEARCH WITH  
WORLD-CLASS  
INFRASTRUCTURE**



**SOPHISTICATED RESEARCH  
INSTRUMENTS CATALOGUE**

# HPLC

## (HIGH PERFORMANCE LIQUID CHROMATOGRAPHY)

### Make and Model

Waters, USA and Gradient pump delta600 & detector PDA2998.



### Specifications

<b>Number of solvents</b>	<b>One to four</b>
Solvent conditioning	Vacuum degas, two (2) operating modes, four (4) chambers, $\approx$ <500 uL internal volume per chamber> <500uL interval volume per chamber
Programmable flow rate range	0.000 and 0.010 to 10.000 mL/min in 0.001-mL/min. increments
Typical operating flow rate range	0.050 to 5.000 mL/min in 0.001-mL/min increments
Gradient profiles	Eleven (11) gradient curves [including linear, step (2 curves), concave (4 curves), and convex (4 curves)]
Flow ramping	Time (0.01 to 30.00 min in 0.01-min increments) to reach maximum flow rate
Maximum operating pressure	5000 psi (345 bar) (0.010 to 3.000 mL/min) Programmable upper and lower limits. Pressure fall-off at $\approx$ >3.000 mL/min.
Pressure ripple	$\leq$ 2.5% (1 mL/min, degassed methanol, at 1700 psi backpressure)

# HPTLC

## (HIGH PERFORMANCE THIN LAYER CHROMATOGRAPHY)

**Make and Model**  
CAMAG, Switzerland



### Applications

- Chromatography is visible and simple
- Little or no sample preparation
- Analysis of dozens of samples, concurrently
- Upto 8 detection modes, without repeating chromatography
- HPTLC Fingerprint- chemical composition of mixtures, represented as photographic images
- Very low cost of analysis and maintenance

# FTIR

## (FOURIER-TRANSFORM INFRARED SPECTROSCOPY)

### Make and Model

Shimadzu Japan and FTIR-8400S



### Specifications

- Optical system- Single beam optics
- Beam splitter- Germanium-coated KBr plate
- Light source -High brightness ceramic
- Detector -Temperature controlled high sensitivity detector (DLATGS detector)
- S/N ratio -Greater than 20,000:1 (KRS-5 window, 4cm-1, 1 minute, 2200cm-1, P-P)
- Wavenumber range- 7,800cm-1 - 350cm-1
- Resolution- 0.85, 1, 2, 4, 8, 16cm-1
- Sample compartment- W200mm x D230mm x H170mm

### Applications

Basic drug research and structural elucidation, Formulation development and validation, Quality control processes for incoming and outgoing materials, Packaging testing

# UV-VISIBLE SPECTROPHOTOMETER

## Make and Model

Shimadzu Japan and UV-1900i



## Specifications

- Optical System: Double Beam Optics Wavelength Range: 190 to 1,100 nm
- Spectral bandwidth: 1 nm (190 to 1,100 nm)
- Wavelength Repeatability:  $\pm 0.1$  nm
- Wavelength Accuracy:  $\pm 0.1$  nm at D2 peak 656.1 nm,  $\pm 0.3$  nm for entire range.
- Photometric Range: Absorbance -4 to 4 Abs Transmittance – 0% to 400%
- Photometric Accuracy: + 0.002 Abs at 0.5 Abs + 0.004 Abs at 1 Abs + 0.006 Abs at 2 Abs
- Source: Halogen (WI) and Deuterium Lamp.
- Detector: Silicon Photodiode Supplied with below accessories:
- Shimadzu Lab Solutions UV-Vis Software

## Applications

Measurement/study in the region including functional group Metal complexes, Kinetic study, different element transition, Specific bond such as D- orbital participation

# Differential Scanning Calorimetry

## Make and Model

Shimadzu, Japan and DSC-60



## Specifications

Principle Heat	Flux Type
Heat Flow Range	$\pm 40\mu\text{W}$
Size (mm)	300Wx 490Dx 290H
Temperature Range	-150 to 600° C
Atmosphere	Inert gas or air
Power supply	100/120 VAC 800AV

## Applications

Thermal analysis study including transition temperature/exothermic heat flow measurement, including melting point, crystallization behaviour, phase transition and thermal stabilization etc.

# AAS

## (Atomic Absorption Spectroscopy)

### Make and Model

SHIMADZU, Japan and AA-7000



### Specifications

The AA-7000 series of Atomic Absorption Spectrophotometers features high-sensitivity analysis, flexible system configuration, and a compact footprint for user-friendly operation. In addition, the AA-7000 systems are the first AAs to employ a vibration sensor as standard.

### Applications

Trace element analysis study in rock, oil plants and biological sample etc

# Accelerated Solvent Extractor

## Make and Model

Thermo Scientific, USA & ASE150

## Specifications

- Elevated temperature (up to 200°C) and pressure (1500 psi) reduce extraction times and solvent consumption.
- Fast pump (70mL/min.) enables fast extractions (typically 12 to 20 mins.)
- Dramatically reduced solvent consumption

## Applications

Using organic acids and aqueous solvents or acids and bases at high temperatures and pressures, the Thermo Scientific Dionex ASE Accelerated Solvent Extraction system extracts compounds from solid and semi-solid samples quickly with small solvent volume.





# Gas Chromatograph

## Make and Model

Thermo scientific,  
USA and Trace1110GC



## Specifications

---

### Performance Specifications

- Typical Retention Time Repeatability: 0.008 min
- Operating Temperature Range: ambient +5 °C to 500 °C
- Pressure Range: 0–1000 kPa (0–145 psi)
- 4 Detectors Available: Flame Ionization Detector, Thermal Conductivity Detector, Electron Capture Detector, Flame Photometric Detector and Nitrogen Phosphorus Detector
- Acquisition Rate: Up to 50 Hz Pneumatics: Manual pneumatics or EPC for gas flow control

## Applications

---

Determination of Organic Volatile Impurities by GC, quality of products in the chemical industry; or measuring toxic substances in soil, air or water

# Tablet Dissolution Tester

Make and Model

Electro lab, India and TDT-08L



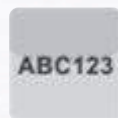
LAN



Display



Print



Alphanumeric



Low Vibration



Password



Media Volume Setting



Infinity Test

## Specifications

Speed range: Variable speed from 20 to 250 RPM

- Speed accuracy: +0.5 RPM
- Temperature range: 20 °C to 40 °C
- Temperature accuracy: +0.1 °C
- Printer interface: RS 232 Connectivity

## Applications

It is used for the determination of active drug ingredient in any pharmaceutical formulation – tablet or capsule as per USP, BP and IP specifications.

# Karl Fischer Apparatus

## Make and Model

Analab, India and  $\mu$ AquaCal50



## Specifications

---

- Method of Detection : Conductometric
- Backlit LCD Display : 20 x 4 Line Alphanumeric
- Range of Moisture Detection : less than 20 PPM to 100%
- Electrode: Dual Platinum Electrode.
- End Point Sensitivity of Moisture Detection : Users Adjustable

## Applications

---

Karl Fischer Titration is a technique for the determination of moisture content. Karl Fischer provides for the specific detection of water content in a product.

# PLETHYSMOMETER

## Make and Model

Panlab, Harvard apparatus, Spain  
Le7500



## Details

The Digital Water Plethysmometer is designed to provide a highly useful tool in the measurement of small volume changes. This test is typically used to follow the evaluation of the inflammatory response experimentally induced in rodents and to screen potential antiinflammatory or anti-edema properties of pharmacological substances.

## Applications

Anti-inflammatory drug screening, Anti-oedema drug screening, Inflammation, Post-operative pain

# RANDALL & SELITTO APPARTUS (RAT PAW PRESSURE INSTRUMENT)

## Make and Model

Panlab, Harvard apparatus, Spain  
Le7306



## Details

---

The Panlab LE7306 paw & test pressure meter is used for performing the Randall & Selitto test in rodents. This test is based on determination of the animal threshold response to pain induced by the application of a uniformly increasing pressure on the paws or the tail.

## Applications

---

Pain disorders, Hyperanalgesics, Neuropathy, Inflammation, Post-operative pain, Analgesics screening.

# NON-INVASIVE BLOOD PRESSURE METER (NIBP)

## Make and Model

Panlab, Harvard apparatus, Spain,  
Le5002



## Details

Panlab NIBP system provides an easy and reliable technique to measure systemic blood pressure and cardiovascular parameters in rodents without any invasive catheterization. The system is composed of a NIBP control unit, pressure cuff & pulse transducer, a heater, restrainers and optional software options.

## Applications

Cardiovascular Disorder, Heart Rate,  
Blood Pressure, Pulse Rate.

# CAMERA ATTACHED TRINOCULAR BIOLOGICAL MICROSCOPE

## Make and Model

Magnus Biological Microscope  
CH20i-TR LED



## Specifications

- Illumination System 6V 20W halogen bulb/LED light source 3W
- Focusing mechanism Coaxial coarse/fine focus adjustment knobs
- Eyepieces iCWHK 10x (FN 18 mm) paired eyepiece (Anti-fungus)
- Objectives iNEA achromat 4X, 10X, 40X, 100X (Anti fungus)
- Observation Head Trinocular head (Inclination 45° ), 360° rotatable with diopter adjustment on the left
- Condenser Abbe condenser with aperture iris diaphragm (N.A. 1.25)
- Camera Magcam DC-5 with CMOS 5.1 MP image sensor and MagVision Software

## Applications

Used to visualize biological specimens like tissue, microorganism with a magnification range of **40x-1000x**. Attached Magcam DC-5 camera and connected software system provides easy image capturing and documentation facility for quality research.

# THERMOCYCLER (PCR)

## Make and Model

Agilent Technologies  
SureCycler 8800



## Specifications

• Maximum Block Ramp Rate	6° C/sec
• Block Temperature Range	4° C to 99° C
• Temperature Accuracy	±0.2° (@95° C)
• Temperature Uniformity	±0.4° (@95° C)
• Gradient Temperature Range	30° C to 99° C
• Volume Capacity	10-100µl
• Ports	2 X USB 2.0

## Applications

The PCR facilitates amplification of infinite copies of the gene of our interest, called amplicons which later used in the downstream molecular application. It is further used in the inherited disease diagnosis, evolutionary studies, phylogenetic analysis and DNA barcoding.



# GEL DOCUMENTATION SYSTEM

## Make and Model

Syngene G:BOX F3



## Specifications

Image resolution (pixels m)	5
Effective resolution (pixels m)	15.1
A/D	12/16 bit
Greyscales	65536
Quantum efficiency @ 425nm	52%
Lens (motor driven)	Zoom f1.2. with lens feedback
Max image area (cm)	32.5 x 24.1

## Applications

Gel doc is the system for imaging fluorescence and visible applications. It is widely used in molecular biology laboratories for the imaging and documentation of nucleic acid and protein suspended within polyacrylamide or agarose gels.

This instrument can automatically select the right lighting and filters to detect close bands on both small and large gels. The stylish and modular designed G:BOX F3 gel doc system includes a high resolution 5 m pixel camera which is capable of giving outstanding images with incredible spatial resolution as well as a motor driven zoom lens and a motor driven filter wheel and feedback lens which allow to optimise image capture using user protocols.

# BIOREACTOR (FERMENTOR)

**Make and Model**  
Zenith BIOFERM-01-03



## Specifications

- Vessel Borosilicate glass vessels of volumes 10L.
- Stirring & Agitation 50-1200 RPM with mechanical coupling.  
50-500 RPM with magnetic coupling
- Temperature 3 °C above room temperature to 60 C.  
Increments of 0.1 °C with water cooling system:
- pH Module Measurement range is 2 pH to 12 pH,  
increments of 0.1 pH.

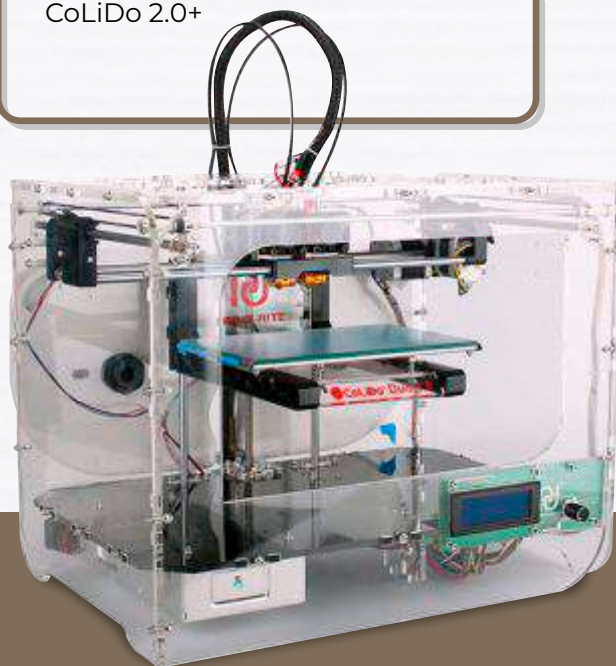
## Applications

An apparatus for growing organisms (yeast, bacteria, or animal cells) under controlled conditions. Used in industrial processes to produce pharmaceuticals, vaccines, or antibodies. Also used to convert raw materials into useful byproducts such as in the bioconversion of corn into ethanol.

# 3D PRINTER

## Make and Model

CoLiDo 2.0+



## Specifications

• Motor Types:	Stepper Motor - 1.8° Step Angle with 1/16 Micro-stepping
• Filament Material	ABS, PLA
• Filament Diameter-	1.75 mm
• Nozzle Diameter	0.4 mm
• Operation Temperature-	15-32°C (60-90°F)
• Print Technology	Fused Deposition Modeling (FDM)
• Build Volume (L x W x H)	22.5 x 14.5 x 14 cm (8.9" x 5.7" x 5.5")
• Layer Resolution	0.1 – 0.4 mm
• Software Bundle	Repetier-HOST
• Supported File Type	STL / G-Code

## Applications

3D printers allow you to create prototypes, models and products out of materials such as metals.

# CNC LATHE

## Make and Model

MTAB XL Turn, Chucker



## Machine Style(s)

---

- Spindle Direction Horizontal
- Operation Type CNC

### HEADSTOCK

- Chuck Size (in.)
- Std 4.000
- Tailstock Standard (in.)
- Quill Dia 1.040 Stroke: 1.600
- Quill Center Mt2

## Applications

---

- Computer Numerical Control (CNC) Lathes are machine tools where the material or part is clamped and rotated by the main spindle, while the cutting tool that work on the material, is mounted and moved in various axis.
- CNC is used for machining parts, where the material / part is clamped and rotated whereas the cutting tool is stationery mounted for OD (Outer Diameter) and ID (Inner Diameter) operations, e.g. shafts and pipes. They are ideal for parts that have same symmetry around an axis that could be chucked up (i.e. radially clamped) in the spindle.
- The lathe is used where precision is utmost important.

# VERTICAL MILLING MACHINE (CNC)

## Make and Model

Sine wave Engineering,  
VMM – A – 200



## Specifications

---

• X – Axis Travel	250 mm
• Y – Axis Travel	175 mm
• Z – Axis Travel	200 mm
• Table Size	500 x 200 mm
• Spindle Nose to Table Top	40 – 190 mm
• Spindle to Column	110 mm
• Spindle Inside Taper	BT 30 / ISO 30
• Maximum Tool Size	Diameter 12 mm, Length 70 mm
• Spindle Motor	2 H.P DC Motor with 3000 RPM

## Applications

---

The vertical milling machine is a precision tool used for shaping and fabrication by the removal of stock typically from metallic work pieces.

# COMPACTION FACTOR TESTING MACHINE

## Make and Model

Rana-P 40x40x5 -ISO

## Specifications

- Power Manual
- Dimensions 350 mm L X 320 mm  
W X 1300 mm H
- Weight 25kg

## Applications

The apparatus is used for determining the workability of fresh concrete, provided the maximum size of the aggregate does not exceed 38mm. The test is particularly useful for concrete mixes of very low work ability where true slump values are not reliable.



# SIEVE SHAKER

## Make and Model

Aimil Ltd. (Civil Engineering),  
AIM-054-1



## Specifications

- Power Electrically operated
- Dimensions 350 mm L X 320 mm W X 1300 mm H
- Weight 25kg

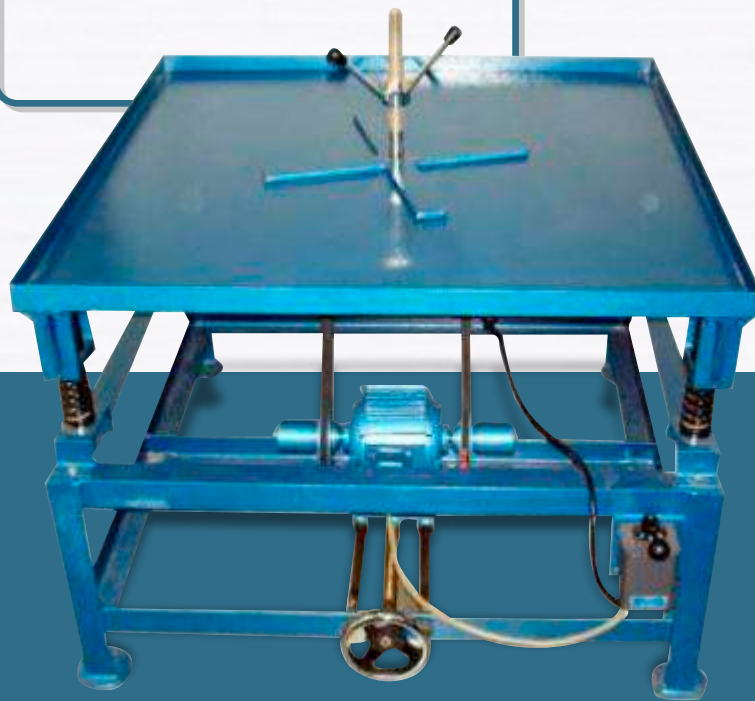
## Applications

For Particle Size Analysis

# VIBRATING TABLE

## Make and Model

Aimil Ltd. AIM 365-1



## Specifications

- Top 50 x 50cm for 4 moulds of 150mm cube (AIM 365-1)
- Power: Electrically operated

## Applications

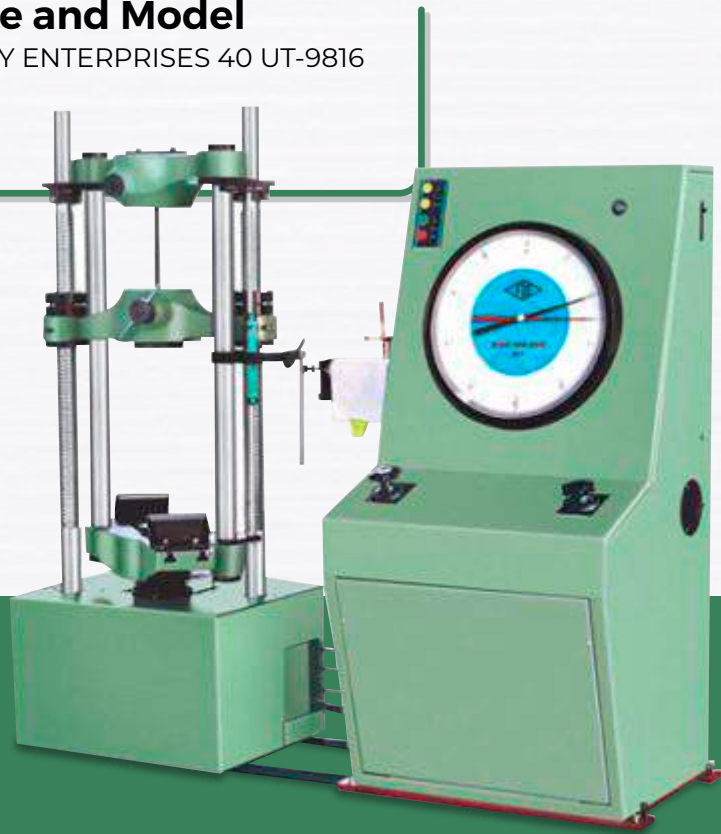
Used for Proper compaction of cement concrete



# UNIVERSAL TESTING MACHINE (UTM)

## Make and Model

EN KAY ENTERPRISES 40 UT-9816



## Specifications

- Capacity: 40 tons
- Dimensional stability
- Low maintenance
- High tensile strength
- High mechanical strength

## Applications

Generally used to test tensile, compressive strength of steel, cables etc.

# COMPRESSION TESTING MACHINE

## Make and Model

EIE-TM-042/111035



## Specifications

- Usage/Application Cube testing purpose
- Manually Operated

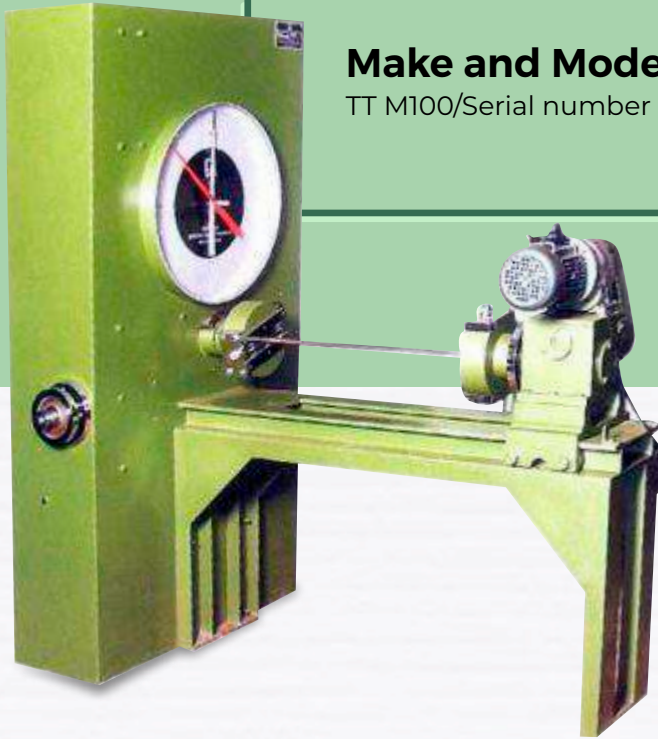
## Applications

Used to determine the compressive strength of concrete cubes, bricks etc.

# TORSION TESTING MACHINE

## Make and Model

TT M100/Serial number 9820



## Specifications

It is designed for conducting Torsion and Twist Tests on various metal wires, tubes sheet materials. Torque measurement is by Pendulum dynamometer System. Torque ranges can be adjusted. Torque is applied to specimen by geared motor through gear box. Autographic recorder can be provided to know the relation between torque and angle of twist on specific request. The Accuracy of the torque indication is  $\pm 1\%$  of the true torque. The complete system is hydraulically damped for vibration free Loading.

## Applications

Used to determine the torsional strength of steel.

# COMPRESSION TESTING MACHINE (DIGITAL)

## Make and Model

AIMIL Ltd and  
AIM 325 AN-DG-1000



## Description and Specifications

Concrete is a man-made material, essentially mixed at site. The properties of concrete depend on the properties of its ingredients and their proportion and it is likely to vary from mix to mix. Tests must be conducted, therefore, to ensure that the concrete used is in accordance with design specifications.

## Applications

For determining the Compressive Strength Measurement

# BITUMEN DUCTILITY TESTING MACHINE

## Make and Model

AIMIL Ltd and AIM 565-1



## Description and Specifications

Designed to test three specimens simultaneously. The machine consists of a carriage moving over a lead screw. An electric motor driven reduction gear unit ensures smooth constant speed and continuous operation. The entire assembly is mounted with water bath completely encased in metal bound hardwood. It is equipped with an electric pump circulator and heater. The temperature is controlled by digital temperature controller. Two rates of travel i.e. 5 cm/min and 1 cm/min are provided. Suitable for operation on 220 V, 50 Hz, Single Phase, AC supply.

## Applications

For determining the degree of ductility of bituminous surfaces

# DIGITAL THEODOLITE

## Make and Model

South Electronic and  
South ET-02, South ET-05



## Specifications

• Min Display Unit	1/5inch Selectable
• Field of view	1Deg30 feet
• Stadia Ratio	100
• System	Liquid Electric Detection
• Work Range	+/-3feet
• Type	LCD Display 2 Sides
• Measuring Method	Absolute code
• Magnification	30X

## Applications

- To measure the horizontal angle and vertical angle between two points accurately up to a high precision
- To check the alignments of roads, railways track tunnel and bridges.
- It is used in the prolongation of alignment of road, railways etc.
- It is used for measurements of bearing and measurements of horizontal and vertical distances and determination of the direction of true north.

# ELECTRICAL CALIBRATION TEST BENCH

## Make and Model

Meter Centre



## Specifications

- |                         |                                  |
|-------------------------|----------------------------------|
| • Voltage               | 0-600V                           |
| • Current               | 0-50A & 0-100A                   |
| • Power                 | 0-750W                           |
| • Power Factor          | 0-1                              |
| • Incoming Power Supply | 415 VAC, 3 phase, 4 wire, 50 Hz. |
| • Connection            | 1-Phase/2-Phase/3-Phase          |

## Applications

Run in motors prior to installation, Welding Machine, Power Factor, Variable Speed Motors, Heaters, Lamps, Fuses, Troubleshooting, Voltage Measurement, Current Measurement, Batteries, Motor Starters, Power Tools, Breakers, Relays

# TRANSFORMER OIL (BDV) TEST SET

**Make and Model**  
Clear Flow Corporation



## Specifications

- Input Voltage 230V A.C.
- Frequency 50Hz
- Output Voltage 0-100KV
- Power 500 VA
- Type Motorised
- Connection 1-Phase

## Applications

Transformer oil serves mainly two purposes one it is liquid insulation in electrical power transformer and two it dissipates heat of the transformer, acts as coolant. In addition to these, this oil serves two purposes, it helps to preserve the core and winding as these are fully immersed inside oil and another important purpose of this oil is, it prevents direct contact of atmospheric oxygen with cellulose compromised due to aging / contamination; it leads to catastrophic event due to insulation flashover. The voltage withstands capability of oil often reduced due to contamination. The contamination can be due to dirt, water ingress and particulate cellulosic fibers.



# SEED GERMINATOR (DUAL CHAMBER)

## Make and Model

AMTECH MODAL NO – 107



## Specifications

- Construction: double walled unit inner chamber made up of S.S. and outer body with M.S. sheet duly powder coated
- Temperature: 5-50+1 is controlled by microprocessor Digital temp. indicator-cu-controller.
- Humidity: controlled by microprocessor Digital Humidity Controller created in S.S. water reservoir fitted at the bottom to provide 60-95% + 3% RH humidity.
- Supply: 220/230 volts A.C.
- Inner chamber size: 555mm×910mm×605mm

## Applications

Seed testing, seed dormancy studies, Crop physiology studies, climate control studies, abiotic stress related studies etc.

# SEED GERMINATOR (SINGLE CHAMBER)

## Make and Model

AMTECH 106; 22X36X24



## Specifications

- Construction: double walled unit inner chamber made up of S.S. and outer body with M.S. sheet duly powder coated
- Temperature: 5-50+1 is controlled by microprocessor Digital temp. indicator-cu-controller.
- Humidity: controlled by microprocessor Digital Humidity Controller created in S.S. water reservoir fitted at the bottom to provide 60-95% + 3% RH humidity.
- Supply: 220/230 volts A.C.
- Inner chamber size: 555mm×910mm×605mm

## Applications

Seed testing, seed dormancy studies, Crop physiology studies, climate control studies, abiotic stress related studies etc

# PLANT GROWTH CHAMBER

## Make and Model

AMTECH 110; CU,  
FT; 570×875×550mm



## Specifications

---

- Automated temperature control
- Insulation is provided with high quality mineral wool to minimize the loss of cooling /heating system
- Cooling system:-50 to +50 with respect to rH setting adjustable in set mode, mechanical refrigeration system, reciprocating compressor and other parts,
- Humidity: 20-100% for 3.3 VDC sensor,
- Light: tubelights in both sides of the chamber, ON-OFF switch on control panel

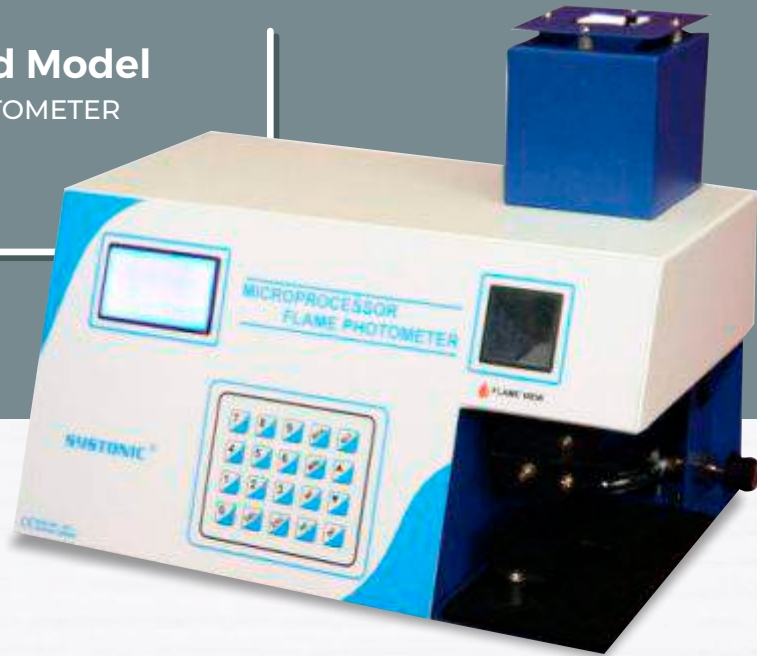
## Applications

---

Crop physiology studies, climate control studies, tissue culture plant hardening, soil, mineral and plant relation studies, abiotic stress related studies etc.

# FLAME PHOTOMETER

**Make and Model**  
FLAME PHOTOMETER



## Specifications

- General range for Na: 0-100ppm, upto 250 meq/L; 100dil
- General range for K: 0-100ppm, upto 250 meq/L; 100dil
- Serum range for Na: 0-200, 1:100 dil
- Serum range for K: 0-200, 1:100 dil
- Urine range for Na: 0-250, 1:100 dil
- Urine range for Na: 0-250, 1:100 dil
- Resolution: 0.1 pp/meq
- Flame system: LPG and dry oil free air
- Detector: silicon photodiode
- Calibration: up to 5-point calibration with curve fitting software

## Applications

For determination of concentrations of Sodium, potassium, calcium & lithium in soil/ water/ milk, food samples etc.

# NITROGEN ANALYSER

Make and Model  
AMTECH – XLASERIES



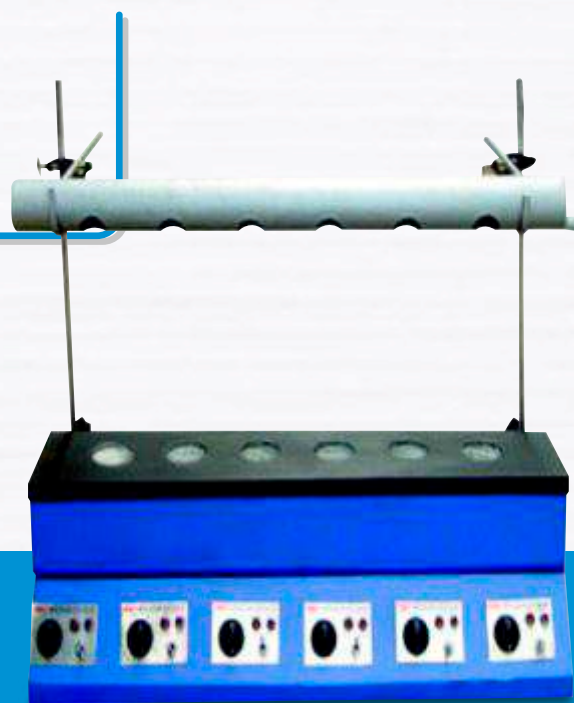
## Specifications

- 32bit processor
- 135×65×36 mm
- Aluminium alloy
- Lattice LCD liquid crystal display
- Working temperature: -20 to 50
- Working humidity: 15% to 95% RH
- Working pressure 86kPa-106kPa
- Concentration unit: PPM, %vol, % LEL, MG/M3, PPB
- Detection mode: pump
- Electrochemistry, infrared detection, PID, thermal conductivity, catalytic

## Applications

Measurement of nitrogen and total nitrogen by recording decomposed sample air analysis.

# KJELDAL DIGESTION UNIT



## Specifications

- Combined distillation and digestion units
- 6 mantle type heating units; each fitted with individual energy regulator
- Sturdy powder coated MS frame
- Can accommodate flasks with 300 ml, 500 ml and 800 ml capacities

## Applications

To determine organic nitrogen and protein contents in soil, plant or other sample.

# ELISA Plate Reader

## Make and Model

Bioline India BPR-2008



## Specifications

• Linear Measurement Range	0.000 to 4.000Abs.
• Light Source	Tungsten Halogen Lamp
• Wave Length	405nm, 450nm, 492nm, 630nm
• Type of Filter	Interference
• Half Bandwidth	8mm $\pm$ 2mm
• Photometric Accuracy	$\pm$ 2% or better
• Optical system	Optical Fiber is used for transmitting light to 8 wells of micro plate

## Applications

Use to measure chemical, biological or physical reactions, properties and analytes within the well of a microplate. A microplate reader is used for the quantification of several biological and chemical assays in a microplate.

# Testimonials of PhD Research Scholars

Keeping pace with the latest developments, Mandsaur University constantly strives to align the Research & Development and the course curriculum is designed to get a deep knowledge of the field. This enables research scholars to perform innovative research and make their presence felt in the national as well as the global arena

**Mayank Jhalani**



The Mandsaur University campus is eminent owning immense Land area. The campus has well ventilated lecture halls and university provides all the facilities to their students. The labs are also well equipped and up to the mark. The faculties are highly qualified with their pronounced knowledge and always ready to help their students. The University provides good provision for research too. I find myself very fortunate to be a part of this Institution as a Ph.D scholar.

**Akhilesh Shrivastava**



Nurturing creativity and inspiring innovation are the key elements of successful education. This university is the perfect amalgamation of both because it recognized globally for its excellence in pursuit of newer horizons to build self-reliant pharmacist through quality pharmacy education. It is an enormous pleasure to pursuing PhD Program in Mandsaur university which has been engaged in making meaningful educational transformations and accomplishing world-class standards of research and academic excellence

**Atul Ashok Deshmukh**



I observed PhD program in Mandsaur University is very well designed. College management and staffs are very supportive. University conducts workshop and seminar time to time to update their students in their respective field. Guide/supervisor is very friendly to their students. They provide proper guidance towards successful research work to their students.

**Asif Anwar**





The PhD Programme of the Mandsaur University is one among the Pinnacle of glory in the said University as the programme is designed in a vivid manner comprehensively catering to the needs of the time, syllabi, guide and the research scholar. The programme is designed such that a research scholar really evolves better on the subject with the consortium of the scholar, guide, Ph.D coordinator.

**B. Kothainayagi**



It was a great experience studying at Mandsaur University. The administration and the faculties are very supportive. Especially the students like us who are studying as well as working are highly obliged. Administration team is notifying repetitively each and every information without hiding anything. I feel inspired and motivated. My overall experience was amazing. Waiting to complete my PhD at the same pace.

**Rajib Lochan Dutta**



At the outset, I would like to express my sincere gratitude for providing me such a wonderful platform for fine tuning my academic and professional aspirations. The diverse background and their depth of knowledge helped us in expanding our knowledge horizon. They always attended to our queries and helped us throughout the course irrespective of time and distance.

**Sreekanth N.P**



There are good enough teaching facilities available at Mandsaur University to meet the needs of PhD students. It has the most excellent infrastructure, but it has still decent supporting services. It is one of the most conducive places for new knowledge to be gained. College is local university classes serve as a dual purpose, too: They offer students plenty of opportunity to become familiar with regular members of the technology, and a challenging programme helps students overcome their problem-solving aversion. It is a pleasure to have such an excellent university and influential mentors.

**Nishant Katiyar**



Being as a scholar I am not eligible to say anything about my University but being as an obedient scholar and knowing the importance of feedback to improve the university, So I will give my full contribution. Mandsaur is not that much developed as compared to Indore but I want to proudly tell you that Mandsaur University is at its best. After joining Ph.D. Programme I am very much surprise that Mandsaur University is giving its best that even other well-known Universities are unable to give that much guidance and facility. I am feeling proud to be a part of Mandsaur University. Thank you Mandsaur University.

**Someshwar Joshi**



I feel lucky to be part of Mandsaur University, it's not just University but it's a home with multicultural. Mandsaur University have a very good infrastructure facilities and equipment for research students. The classrooms are well structured, laboratory are well equipped and all books are available at library. The quality of teaching is very good and is also related to the practical aspects. Life at college campus is very interesting. Many sports and events took place at the university campus which motivates the student to take part in these events. I am very thankful for the teachers and staff who helped me a lot with everything that I needed. They are always available to support and keep me motivated towards the future by introducing not just me but everyone at University with potential employers for our future career.

**Kailas Prabhu Kapse**



Mandsaur University is constantly upgrading its academic courses and Laboratories helping students in their research. It encourages project based learning., providing good technical services as per global requirements. The faculty is rich in experience and guiding students to achieve their life goals. It encourages students to participate in national, International events nurturing their technical and leadership skills.

**Nandini Kanhaiyalal Bhandari**



The facilities in the University are excellent, and I believe these are helping to make education the best. The university is at prime location and easy accessibility. I really appreciate the teaching faculties and non-teaching staffs. One thing I really admire about the canteen where I got good quality of food with reasonable price.

**Dipti Ranjan Parida**



PhD program of Mandsaur University is very Good. The behavior of all staff related to this course is very co-operative. You can call and get immediate response on every matter. Environment of university is positive. Meanwhile the role of supervisor in whole program is too caring and supportive. So I would like to recommend everyone who want to join such program give first preference to this university.

**Ramakant  
Dwevedi**



Mandsaur University has adequate facilities to cater the requirements of PhD scholars. It not only has good infrastructure, but also has supporting faculties. It is a one of best place for learning. College Management conducts various activities, events and workshop apart from the regular curriculum to provide students with exposure to the latest technology and to make them problem solving attitude. I feel privileged to have such wonderful university and mentors.

**GHANSHYAM  
PRASAD DUBEY**



The PhD programme department is very Supportive. The guide is very supportive and maintains a courteous and professional demeanour. Both regulations are upheld in compliance with UGC guidelines.

**Utkarsh  
Shrivastava**





**MANDSAUR**  
**UNIVERSITY**  
MAKING FUTURE READY!

---

SH-31, Mhow Neemuch  
By-Pass Road Mandsaur - 458001. M.P.

[www.meu.edu.in](http://www.meu.edu.in)

**99817-81655, 97772-09277**